

Lanakila Baptist High School

February 2021

Re-Enrollment - New!

What a non-traditional year this has been, but just like that, we're getting ready for next year! Re-enrollment forms are being mailed (via USPS) today.

You may notice something different this year... the re-enrollment fee is now referred to as a Non-Refundable Enrollment Deposit. The deposit is \$500, however, for the 2021-2022 school year, it will be applied to your total Base Tuition. The Base Tuition includes enrollment, registration, and tuition... no more confusion as to what is paying for what. (See the LBS Tuition Schedule attached for details)

Re-enrollment begins February 1st. If your Enrollment Deposit is received by close of business on Thursday, March 11th, you will receive \$200 off your Base Tuition for the 2021-2022 school year. This discount applies to re-enrolling students only. Beginning March 12th, enrollment will be on a first-come, first-serve basis, so please be sure to re-enroll your child soon to ensure their enrollment for next year.



LBS Tuition Schedule 2021-2022.pdf

[Download](#)
155.2 KB

1st Semester Principal's List and Honor Roll

Let's give it up to all our students who made it onto our Principal's List (straight A's) and Honor Roll (all A's & B's)





Spirit Week: February 1-5

Next week is Spirit Week and we are so excited to have some campus fun! We will have daily dress-out days, as well as afternoon activities for grade-level cohorts - to maintain physical-distancing, we have plans for smaller group activities.

Don't forget... Dress Code is in effect (i.e. NO shorts, midriffs, etc... see your Parent/Student Handbook for the full dress code; also attached)

Monday (2/1) - PJ Day

Tuesday (2/2) - High School Stereotypes

Wednesday (2/3) - Disney Day (NO weapons... NO lightsabers)

Thursday (2/4) - Monochromatic Outfits

Friday (2/5) - Water Day (board-shorts or PE shorts are okay; no white clothing if getting wet)

The attached Spirit Week flyer contains more info on all our festivities including ideas for what to wear or bring to participate... and what NOT to wear or bring!



Spirit Week copy.pdf



Download

149.1 KB



20-21 LBS Parent Student Handbook.pdf



Download

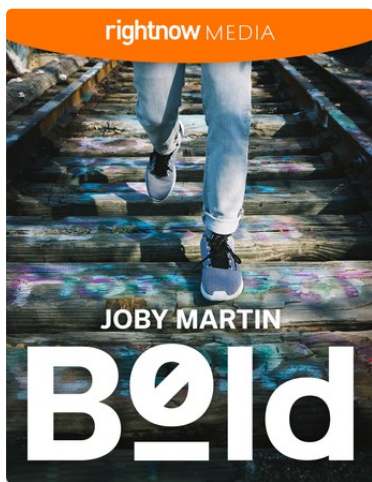
1.1 MB

Mid-Quarter Progress Reports

For students who have a 69% or lower in one or more classes, a progress report will be emailed home to parents next week. As a reminder, you have access to your child's grades throughout the year. Please remember to check your child's grades regularly.

Spiritual Emphasis Week: February 8-12

Spiritual Emphasis Week is a time where we truly dive into the Word of God through teachings, scripture, prayer, and group discussions on living according to His Will. This semester, we will break out into groups of boys and girls focusing on topics specific to them. Our hope is that this will create a comfortable environment allowing students to share freely and have meaningful conversations. See below for more information.



Spiritual Emphasis Week - Boys Breakout

Teen guys want to be courageous and brave. In an era of superhero movies, they strive to be characterized by fearlessness, confidence, and power. But boldness is empty bravado when not used in the way God intended.

In *Bold*, a 4-part video Bible study series, pastor Joby Martin uses Scripture to teach teen guys that their desires to be bold are not without a purpose. They were created to play a part in God's redemptive work in the world and live courageously for the cause of God's Kingdom. God has empowered guys to live a life of boldness—in their faith, with their words, to share the truth, and through prayer. Because our God is so powerful, young men who follow Christ can—and must—live boldly in the world.

Spiritual Emphasis Week - Girls Breakout

What do you want to be when you grow up? It was an easy question to answer when they were little, but life gets complicated for teen girls. When they get stuck in drama, discontentment, sadness, and shame, how can they even begin to look ahead to the future?

In this 4-part series, author, Bible teacher, and Founder of IF: Gathering Jennie Allen inspires teen girls to throw off everything that holds them back and be energized by God's dreams for them.



Right Now Media

Right Now Media is like the "Netflix" of Christian Bible Study. They have great devotionals and studies to help you grow in your faith and walk with the Lord. They also have topical studies for marriage, parenting, dealing with grief, and many more. This is a wonderful resource for your whole family! Download Right Now Media to get started!

<https://www.rightnowmedia.org/Account/Invite/lanakilabaptisthighschool>

No School - February 15 - Presidents Day

Athletics

On-campus news:

This semester, we will begin Club Cheer for girls who are interested. We are also working on forming club volleyball and club basketball soon, so be on the lookout for that.


ILH and Pac5 news:


We have not received any new news regarding ILH or Pac5 athletics.





Lanakila Baptist High School

 Facebook

 91-1219 Renton Road, Ewa Bea...

 cory.quemado@lbswarriors.org

 808-681-3146

 lbswarriors.com